

DOCUMENT RESUME

ED 445 584

HE 033 178

TITLE Informational Memorandum: The New Freshman Class, Fall 1999.
INSTITUTION Wisconsin Univ. System, Madison.
PUB DATE 2000-05-00
NOTE 13p.; For related documents, see HE 033 175-179.
AVAILABLE FROM University of Wisconsin System, Office of Policy Analysis
and Research, 1534 Van Hise Hall, 1220 Linden Drive,
Madison, WI 53706-1525; Tel: 608-262-6441; Fax:
608-265-3175; e-mail: OPAR@uwsa.edu; Web site:
<http://www.uwsa.edu/opar/>.
PUB TYPE Numerical/Quantitative Data (110) -- Reports - Descriptive
(141)
EDRS PRICE MF01/PC01 Plus Postage.
DESCRIPTORS Age Differences; *College Admission; *College Freshmen;
*Enrollment Trends; High Schools; Higher Education; Racial
Differences; Sex Differences; State Universities; Tables
(Data); Trend Analysis
IDENTIFIERS *University of Wisconsin System

ABSTRACT

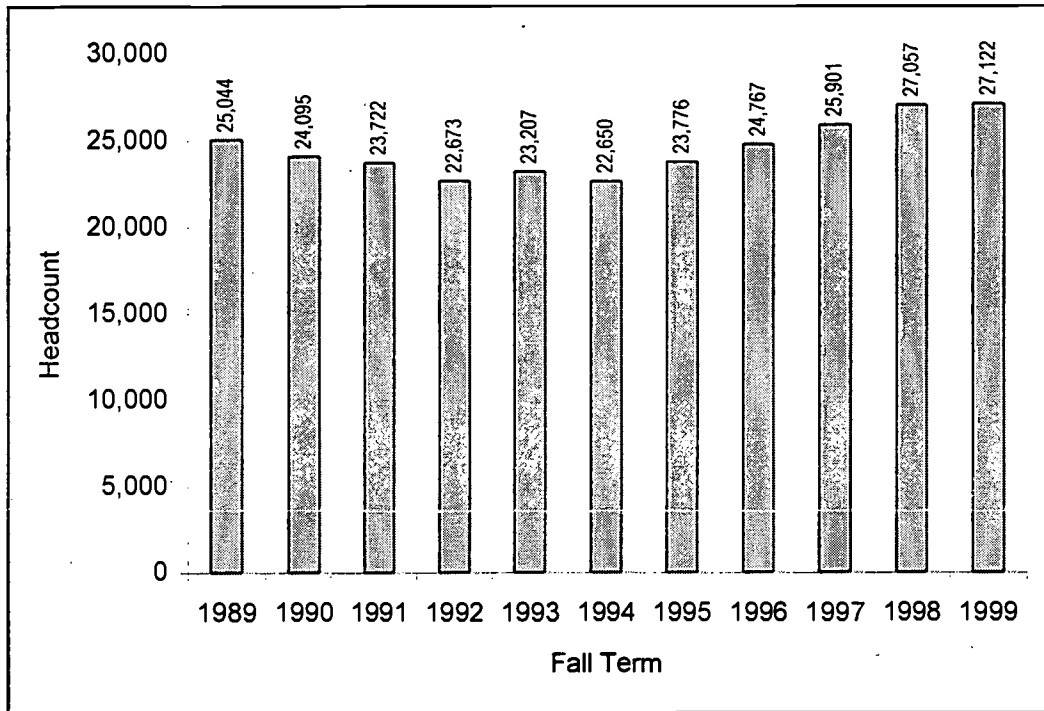
This publication presents data on the University of Wisconsin (UW) System new freshman enrollment for fall 1999. Data tables include new freshman headcount information: by institution, fall 1999; by institution, fall 1989, fall 1994, and fall 1999; by resident status and institution, fall 1999; by resident status, fall 1989 to fall 1999; by gender and institution, fall 1999; by gender, fall 1989 to fall 1999; by race/ethnicity and institution, fall 1999; by race/ethnicity, fall 1989 to fall 1999; by age group, fall 1999; by age group, fall 1989 to fall 1999; by admission category and institution, fall 1999; by admission category, fall 1990 to fall 1999; by ACT composite score and institution, fall 1999; by ACT composite score, fall 1989 to fall 1999; by high school rank and institution, fall 1999; and by high school rank, fall 1989, fall 1994, and fall 1999. Appended are data tables showing new freshmen headcount enrollment by institution, fall 1972 to fall 1999, and new freshmen by average high school percentile rank and institution, fall 1976 to fall 1999. (SM)



Informational Memorandum

The New Freshman Class: Fall 1999

**UW System New Freshman Headcount
Fall 1989 to Fall 1999**



Highlights

Percentage of Fall 1999 UW System new freshmen who:

- are Wisconsin residents 83%
- are women..... 56%
- are students of color..... 8%
- were conventional admits..... 95%
- scored above the national ACT average score of 21..... 62%
- were in the top quartile of their high school classes 46%

The University of Wisconsin System
Office of Policy Analysis and Research
May, 2000

1534 Van Hise Hall
1220 Linden Drive
Madison, WI 53706
(608) 262-6441

<http://www.uwsa.edu/opar/>

PERMISSION TO REPRODUCE AND
DISSEMINATE THIS MATERIAL HAS
BEEN GRANTED BY

S. Wilhelm

TO THE EDUCATIONAL RESOURCES
INFORMATION CENTER (ERIC)

U.S. DEPARTMENT OF EDUCATION
Office of Educational Research and Improvement
EDUCATIONAL RESOURCES INFORMATION
CENTER (ERIC)

- This document has been reproduced as received from the person or organization originating it.
- Minor changes have been made to improve reproduction quality.

• Points of view or opinions stated in this document do not necessarily represent official OERI position or policy.

ENROLLMENT HEADCOUNT

In Fall 1999, 27,122 new freshmen enrolled in the UW System (Table 1). This is the largest new freshman class since 1988 (see cover) when new freshman enrollments peaked at 28,104. The proportion of total institutional enrollment made up of new freshmen ranges from 12.8% at UW-Milwaukee to 34.5% at UW Colleges.

Table 1
UW System New Freshman Headcount by Institution
Fall 1999

	#	% UWS New Freshmen	% Institutional Enrollment
Madison	5,664	20.9%	14.1%
Milwaukee	2,937	10.8%	12.8%
Eau Claire	2,016	7.4%	19.4%
Green Bay	934	3.4%	17.2%
La Crosse	1,638	6.0%	17.6%
Oshkosh	1,852	6.8%	17.2%
Parkside	889	3.3%	18.0%
Platteville	1,138	4.2%	21.3%
River Falls	1,127	4.2%	19.7%
Stevens Point	1,500	5.5%	17.6%
Stout	1,324	4.9%	17.6%
Superior	432	1.6%	15.8%
Whitewater	1,907	7.0%	17.9%
Colleges	3,764	13.9%	34.5%
Total	27,122	100.0%	17.5%

At 17.5% of UW System enrollment, new freshmen make up a higher percentage of enrollment than they did both five and ten years ago (Table 2).

Table 2
UW System New Freshman Headcount by Institution
Fall 1989, Fall 1994, and Fall 1999

	1989			1994			1999		
	#	% of UWS NF Enroll	% of Inst. Enroll.	#	% of UWS NF Enroll	% of Inst. Enroll.	#	% of UWS NF Enroll	% of Inst. Enroll.
MSN	4,993	19.9%	11.5%	4,681	20.7%	11.8%	5,664	20.9%	14.1%
MIL	2,461	9.8%	9.9%	1,806	8.0%	7.9%	2,937	10.8%	12.8%
EAU	1,934	7.7%	18.0%	2,088	9.2%	20.2%	2,016	7.4%	19.4%
GBY	782	3.1%	16.4%	883	3.9%	15.7%	934	3.4%	17.2%
LAC	1,689	6.7%	18.8%	1,504	6.6%	17.5%	1,638	6.0%	17.6%
OSH	1,730	6.9%	16.0%	1,393	6.2%	13.2%	1,852	6.8%	17.2%
PKS	757	3.0%	14.5%	770	3.4%	15.3%	889	3.3%	18.0%
PLT	995	4.0%	18.3%	958	4.2%	18.6%	1,138	4.2%	21.3%
RVF	957	3.8%	18.3%	1,004	4.4%	18.6%	1,127	4.2%	19.7%
STP	1,690	6.7%	19.0%	1,378	6.1%	16.3%	1,500	5.5%	17.6%
STO	1,143	4.6%	15.6%	1,075	4.7%	14.5%	1,324	4.9%	17.6%
SUP	414	1.7%	16.2%	285	1.3%	11.0%	432	1.6%	15.8%
WTW	1,836	7.3%	17.9%	1,704	7.5%	16.3%	1,907	7.0%	17.9%
UWC	3,663	14.6%	33.3%	3,121	13.8%	31.8%	3,764	13.9%	34.5%
Total	25,044	100.0%	15.7%	22,650	100.0%	14.9%	27,122	100.0%	17.5%

DEMOGRAPHICS

RESIDENT STATUS

In Fall 1999, 83.2% of new freshmen were Wisconsin residents, 9.7% were students enrolled under the Minnesota/Michigan reciprocity agreements, and 7.1% were other non-resident new freshmen (Table 3).

Table 3
UW System New Freshmen by Resident Status and Institution
Fall 1999

	WI Resident		Non-Resident		Compact*		Total
	#	%	#	%	#	%	#
MSN	3,779	66.7%	1,211	21.4%	674	11.9%	5,664
MIL	2,822	96.1%	90	3.1%	25	0.9%	2,937
EAU	1,505	74.7%	25	1.2%	486	24.1%	2,016
GBY	865	92.6%	52	5.6%	17	1.8%	934
LAC	1,368	83.5%	58	3.5%	212	12.9%	1,638
OSH	1,786	96.4%	49	2.6%	17	0.9%	1,852
PKS	818	92.0%	65	7.3%	6	0.7%	889
PLT	1,032	90.7%	76	6.7%	30	2.6%	1,138
RVF	590	52.4%	21	1.9%	516	45.8%	1,127
STP	1,367	91.1%	78	5.2%	55	3.7%	1,500
STO	952	71.9%	16	1.2%	356	26.9%	1,324
SUP	242	56.0%	20	4.6%	170	39.4%	432
WTW	1,800	94.4%	98	5.1%	9	0.5%	1,907
UWC	3,643	96.8%	65	1.7%	56	1.5%	3,764
Total	22,569	83.2%	1,924	7.1%	2,629	9.7%	27,122

* Compact includes Minnesota and Michigan compacts.

The proportion of new freshmen who enrolled under either the Minnesota or Michigan reciprocity agreements has been relatively consistent over the past five years (Table 4). The proportion of other non-resident new freshmen, at 7.1%, is the lowest since Fall 1989. The proportion of Wisconsin resident new freshmen has ranged from 82.0% to 84.5% in the past ten years.

Table 4
UW System New Freshmen by Resident Status
Fall 1989 to Fall 1999

	WI Resident	Non-Resident	Compact*	Total
1989	83.8%	8.1%	8.1%	25,044
1990	84.5%	7.5%	8.1%	24,095
1991	83.6%	7.4%	9.0%	23,722
1992	84.0%	7.7%	8.3%	22,673
1993	83.9%	8.2%	7.9%	23,207
1994	82.5%	8.3%	9.1%	22,650
1995	82.7%	8.1%	9.1%	23,776
1996	82.2%	8.0%	9.6%	24,767
1997	82.0%	8.1%	9.7%	25,901
1998	82.3%	8.1%	9.5%	27,057
1999	83.2%	7.1%	9.7%	27,122

* Compact includes Minnesota and Michigan compacts.

GENDER

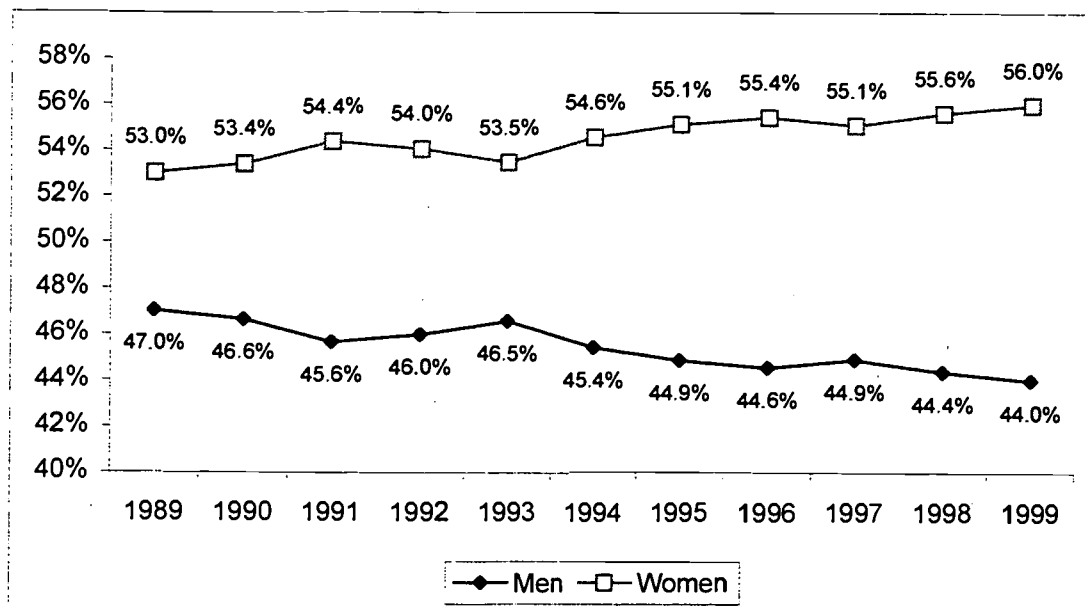
Female students comprised 56.0% of the new freshmen class in Fall 1999 while male students comprised 44.0% (Table 5). The percentage of female students by institution ranged from 35.4% at UW-Platteville to 66.2% at UW-Green Bay.

Table 5
UW System New Freshmen by Gender and Institution
Fall 1999

	Female		Male		Total
	#	%	#	%	#
MSN	3,069	54.2%	2,595	45.8%	5,664
MIL	1,667	56.8%	1,270	43.2%	2,937
EAU	1,280	63.5%	736	36.5%	2,016
GBY	618	66.2%	316	33.8%	934
LAC	1,041	63.6%	597	36.4%	1,638
OSH	1,099	59.3%	753	40.7%	1,852
PKS	469	52.8%	420	47.2%	889
PLT	403	35.4%	735	64.6%	1,138
RVF	699	62.0%	428	38.0%	1,127
STP	856	57.1%	644	42.9%	1,500
STO	667	50.4%	657	49.6%	1,324
SUP	260	60.2%	172	39.8%	432
WTW	1,033	54.2%	874	45.8%	1,907
UWC	2,026	53.8%	1,738	46.2%	3,764
Total	15,187	56.0%	11,935	44.0%	27,122

Figure 1 shows the trend in new freshmen enrollment by gender from Fall 1989 to Fall 1999. While female students have made up the majority of the UW System new freshman class for at least 14 years; the gap between percentages in female and male students, currently 12 percentage points, is the largest in the past decade.

Figure 1
UW System New Freshmen by Gender
Fall 1989 to Fall 1999



RACE/ETHNICITY

In Fall 1999, students of color made up 7.8% of the new freshman class while White students made up 91.1% and international students 1.1% (Table 6). The percentage of students of color by institution ranged from 2.8% at UW-Superior to 20.5% at UW-Parkside.

Table 6
UW System New Freshmen by Race/Ethnicity and Institution
Fall 1999

	African American		Hispanic/Latino		American Indian		Asian American		All Students of Color		Inter-national		White/Unknown		Total
	#	%	#	%	#	%	#	%	#	%	#	%	#	%	
MSN	136	2.4%	147	2.6%	35	0.6%	250	4.4%	568	10.0%	145	2.6%	4,951	87.4%	5,664
MIL	249	8.5%	125	4.3%	20	0.7%	129	4.4%	523	17.8%	16	0.5%	2,398	81.6%	2,937
EAU	17	0.8%	24	1.2%	10	0.5%	56	2.8%	107	5.3%	1	0.0%	1,908	94.6%	2,016
GBY	9	1.0%	6	0.6%	18	1.9%	20	2.1%	53	5.7%	15	1.6%	866	92.7%	934
LAC	21	1.3%	15	0.9%	12	0.7%	34	2.1%	82	5.0%	7	0.4%	1,549	94.6%	1,638
OSH	19	1.0%	18	1.0%	12	0.6%	22	1.2%	71	3.8%	14	0.8%	1,767	95.4%	1,852
PKS	92	10.3%	64	7.2%	5	0.6%	21	2.4%	182	20.5%	3	0.3%	704	79.2%	889
PLT	12	1.1%	6	0.5%	3	0.3%	14	1.2%	35	3.1%	1	0.1%	1,102	96.8%	1,138
RVF	11	1.0%	11	1.0%	8	0.7%	26	2.3%	56	5.0%	12	1.1%	1,059	94.0%	1,127
STP	12	0.8%	13	0.9%	11	0.7%	19	1.3%	55	3.7%	30	2.0%	1,415	94.3%	1,500
STO	10	0.8%	11	0.8%	5	0.4%	28	2.1%	54	4.1%	4	0.3%	1,266	95.6%	1,324
SUP	3	0.7%	2	0.5%	6	1.4%	1	0.2%	12	2.8%	9	2.1%	411	95.1%	432
WTW	75	3.9%	43	2.3%	9	0.5%	26	1.4%	153	8.0%	13	0.7%	1,741	91.3%	1,907
UWC	35	0.9%	40	1.1%	20	0.5%	75	2.0%	170	4.5%	29	0.8%	3,565	94.7%	3,764
Total	701	2.6%	525	1.9%	174	0.6%	721	2.7%	2,121	7.8%	299	1.1%	24,702	91.1%	27,122

Although there were some year to year fluctuations within categories, the Fall 1999 proportion of White new freshmen was the lowest since 1989 and the proportion of students of color, at 7.8%, is the highest since 1989 (Table 7).

Table 7
UW System New Freshmen by Race/Ethnicity
Fall 1989 to Fall 1999

	African American		Hispanic/Latino		American Indian		Asian American		All Students of Color		Inter-national		White/Unknown		Total
	#	%	#	%	#	%	#	%	#	%	#	%	#	%	
1989	530	2.1%	271	1.1%	164	0.7%	459	1.8%	1,424	5.7%	272	1.1%	23,348	93.2%	25,044
1990	560	2.3%	316	1.3%	161	0.7%	480	2.0%	1,517	6.3%	303	1.3%	22,275	92.4%	24,095
1991	526	2.2%	342	1.4%	165	0.7%	534	2.3%	1,567	6.6%	249	1.0%	21,906	92.3%	23,722
1992	566	2.5%	387	1.7%	144	0.6%	557	2.5%	1,654	7.3%	287	1.3%	20,732	91.4%	22,673
1993	603	2.6%	400	1.7%	164	0.7%	563	2.4%	1,730	7.5%	241	1.0%	21,236	91.5%	23,207
1994	498	2.2%	401	1.8%	159	0.7%	547	2.4%	1,605	7.1%	257	1.1%	20,788	91.8%	22,650
1995	548	2.3%	389	1.6%	158	0.7%	564	2.4%	1,659	7.0%	274	1.2%	21,843	91.9%	23,776
1996	536	2.2%	371	1.5%	158	0.6%	596	2.4%	1,661	6.7%	275	1.1%	22,831	92.2%	24,767
1997	683	2.6%	468	1.8%	161	0.6%	608	2.3%	1,920	7.4%	309	1.2%	23,672	91.4%	25,901
1998	701	2.6%	492	1.8%	160	0.6%	700	2.6%	2,053	7.6%	298	1.1%	24,706	91.3%	27,057
1999	701	2.6%	525	1.9%	174	0.6%	721	2.7%	2,121	7.8%	299	1.1%	24,702	91.1%	27,122

AGE

UW System new freshmen age 19 and under make up the vast majority of new freshmen at 95.3%. The percentage of new freshmen age 20 and over is 5.7% for the UW System as a whole and ranges from less than 1.0% at UW-Madison and UW-Eau Claire to 14.1% at UW Colleges (Table 8).

**Table 8
UW System New Freshmen by Age Group
Fall 1999**

	19 and Under		20 to 24		25 to 34		35 and Over		Total
	#	%	#	%	#	%	#	%	
MSN	5,617	99.2%	42	0.7%	5	0.1%	0	0.0%	5,664
MIL	2,767	94.2%	133	4.5%	31	1.1%	6	0.2%	2,937
EAU	1,999	99.2%	16	0.8%	1	0.0%	0	0.0%	2,016
GBY	894	95.7%	25	2.7%	9	1.0%	6	0.6%	934
LAC	1,621	99.0%	14	0.9%	1	0.1%	2	0.1%	1,638
OSH	1,803	97.4%	30	1.6%	12	0.6%	7	0.4%	1,852
PKS	803	90.3%	56	6.3%	20	2.2%	10	1.1%	889
PLT	1,085	95.3%	28	2.5%	13	1.1%	12	1.1%	1,138
RVF	1,092	96.9%	31	2.8%	1	0.1%	3	0.3%	1,127
STP	1,459	97.3%	28	1.9%	8	0.5%	5	0.3%	1,500
STO	1,274	96.2%	44	3.3%	3	0.2%	3	0.2%	1,324
SUP	382	88.4%	34	7.9%	12	2.8%	4	0.9%	432
WTW	1,827	95.8%	64	3.4%	12	0.6%	4	0.2%	1,907
UWC	3,231	85.8%	333	8.8%	135	3.6%	65	1.7%	3,764
Total	25,854	95.3%	878	3.2%	263	1.0%	127	0.5%	27,122

Overall, the proportion of UW System new freshmen age 19 and under has been growing. The proportion of UW System new freshmen ages 20-24, 25-34 and 35 and over have all declined since 1991 and all are lower than the proportions in 1989 (Table 9).

**Table 9
UW System New Freshmen by Age Group
Fall 1989 to Fall 1999**

	19 and Under		20 to 24		25 to 34		35 and Over		Total
	#	%	#	%	#	%	#	%	
1989	23,203	92.6%	1,054	4.2%	561	2.2%	226	0.9%	25,044
1990	21,797	90.5%	1,353	5.6%	674	2.8%	271	1.1%	24,095
1991	21,442	90.4%	1,309	5.5%	672	2.8%	299	1.3%	23,722
1992	20,797	91.7%	1,100	4.9%	530	2.3%	246	1.1%	22,673
1993	21,366	92.1%	1,056	4.6%	543	2.3%	242	1.0%	23,207
1994	20,881	92.2%	1,094	4.8%	464	2.0%	211	0.9%	22,650
1995	22,187	93.3%	983	4.1%	415	1.7%	191	0.8%	23,776
1996	23,312	94.1%	913	3.7%	351	1.4%	191	0.8%	24,767
1997	24,479	94.5%	921	3.6%	341	1.3%	160	0.6%	25,901
1998	25,700	95.0%	931	3.4%	293	1.1%	133	0.5%	27,057
1999	25,854	95.3%	878	3.2%	263	1.0%	127	0.5%	27,122

EDUCATIONAL PREPARATION

ADMISSION CATEGORY

In Fall 1999, 95.1% of all UW System new freshmen admitted were conventional admits (Table 10). Older new freshmen, those 21 years of age and older as of September 1 of the Fall they first enroll, comprised 2.0% of UW System new freshman admits. New freshmen admitted as exceptions made up 3.0% of UW System new freshmen.

Table 10
UW System New Freshmen by Admission Category and Institution
Fall 1999

	Conventional		Non-Conventional			
	Standard & Discretionary	%	Older	%	Exception	%
MSN	5,569	98.3%	1	0.0%	94	1.7%
MIL	2,838	96.6%	32	1.1%	67	2.3%
EAU	1,948	96.6%	3	0.1%	65	3.2%
GBY	927	99.3%	3	0.3%	4	0.4%
LAC	1,618	98.8%	9	0.5%	11	0.7%
OSH	1,788	96.5%	29	1.6%	35	1.9%
PKS	797	89.7%	57	6.4%	35	3.9%
PLT	1,072	94.2%	29	2.5%	37	3.3%
RVF	1,109	98.4%	6	0.5%	12	1.1%
STP	1,459	97.3%	15	1.0%	26	1.7%
STO	1,221	92.2%	18	1.4%	85	6.4%
SUP	397	91.9%	21	4.9%	14	3.2%
WTW	1,774	93.0%	36	1.9%	97	5.1%
UWC	3,268	86.8%	270	7.2%	226	6.0%
Total	25,785	95.1%	529	2.0%	808	3.0%

The proportion of new freshmen admitted as conventional admits has ranged from 93.2% to 95.1% in the last decade (Table 11). The percentage of older new freshmen admits has declined from 4.3% in Fall 1991 to its current low of 2.0%. The percentage of new freshmen admitted as exceptions has ranged between 2.0% to 3.0% since Fall 1990, the first year these data were collected.

Table 11
UW System New Freshmen by Admission Category
Fall 1990 to Fall 1999

	Conventional		Non-Conventional			
	Standard & Discretionary	%	Older	%	Exception	%
1990	22,582	93.7%	949	3.9%	564	2.3%
1991	22,099	93.2%	1,031	4.3%	592	2.5%
1992	21,362	94.2%	821	3.6%	490	2.2%
1993	21,815	94.0%	940	4.1%	453	2.0%
1994	21,298	94.0%	822	3.6%	530	2.3%
1995	22,515	94.7%	759	3.2%	502	2.1%
1996	23,493	94.9%	634	2.6%	640	2.6%
1997	24,461	95.1%	580	2.3%	678	2.6%
1998	25,697	95.0%	590	2.2%	770	2.8%
1999	25,785	95.1%	529	2.0%	808	3.0%

ACT SCORES

Table 12 shows the average ACT composite scores of Fall 1999 new freshmen by institution. The average ACT composite score of new freshmen ranged from 26.7 at UW-Madison to 20.2 at UW-Parkside.

Table 12
UW System New Freshmen by ACT Composite Score and Institution
Fall 1999

	Average
MSN	26.7
MIL	21.8
EAU	23.6
GBY	22.8
LAC	23.8
OSH	22.0
PKS	20.2
PLT	22.6
RVF	22.6
STP	22.8
STO	21.4
SUP	20.9
WTW	21.8
UWC	20.4
UW System	22.9

The average ACT composite score of both UW System new freshmen and national test takers fell slightly from 1998 (Table 13). The UW System new freshman's average ACT composite score of 22.9 is almost two full test points higher than the national average of 21.0. Since 1989, when scores from a revised ACT test became available, the average ACT composite score of UW System new freshmen has ranged from 1.5 to 2.0 points above the national average.

Table 13
UW System New Freshmen by ACT Composite Score
Fall 1989 to Fall 1999

	1989	1990	1991	1992	1993	1994	1995	1996	1997	1998	1999
UW System New Freshmen	22.4	22.2	22.1	22.1	22.4	22.6	22.8	22.8	23.0	23.0	22.9
National Average	20.6	20.6	20.6	20.6	20.7	20.8	20.8	20.9	21.0	21.0	21.0

HIGH SCHOOL RANK

In Fall 1999, 46.3% of UW System new freshmen graduated from high school in the top 25% of their high school classes (Table 14). More than four of every five Fall 1999 new freshmen graduated in the top half of their high school classes.

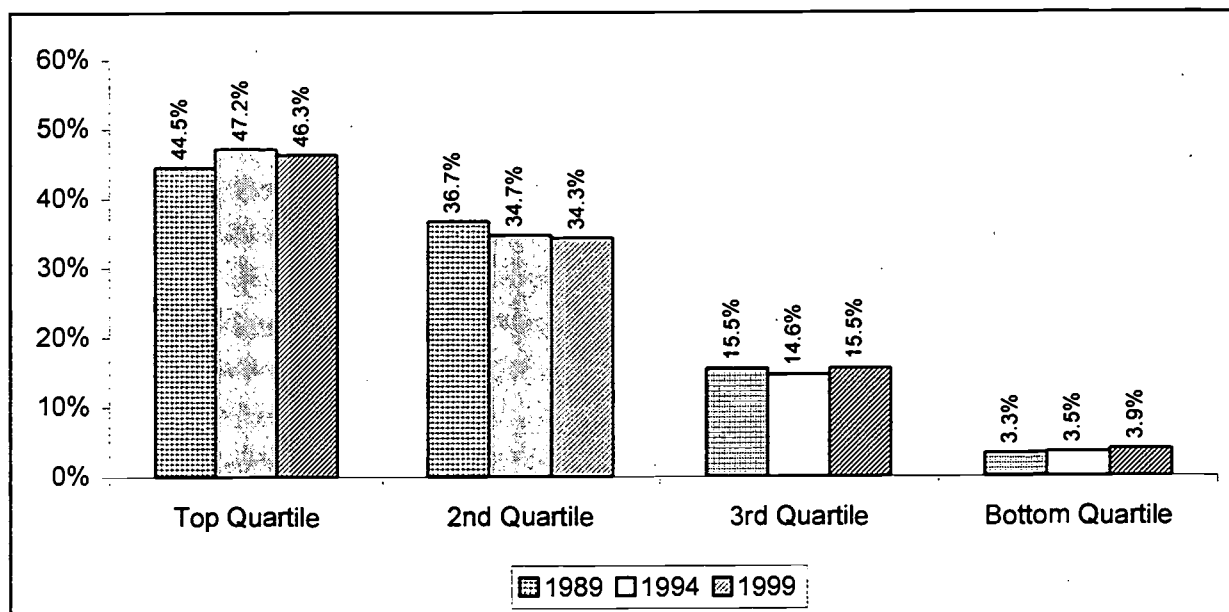
Table 14
UW System New Freshmen by High School Rank and Institution
Fall 1999

	Top Quartile		2nd Quartile		Top Half		3rd Quartile		Bottom Quartile	
	#	%	#	%	#	%	#	%	#	%
MSN	4,201	88.1%	511	10.7%	4,712	98.8%	48	1.0%	11	0.2%
MIL	757	27.8%	1,056	38.8%	1,813	66.6%	684	25.1%	224	8.2%
EAU	1,058	53.3%	793	40.0%	1,851	93.3%	132	6.7%	1	0.1%
GBY	418	47.4%	401	45.5%	819	92.9%	58	6.6%	5	0.6%
LAC	1,026	64.7%	533	33.6%	1,559	98.2%	27	1.7%	1	0.1%
OSH	580	35.2%	832	50.5%	1,412	85.6%	237	14.4%	0	0.0%
PKS	201	25.0%	280	34.8%	481	59.8%	251	31.2%	73	9.1%
PLT	444	40.9%	404	37.2%	848	78.2%	210	19.4%	27	2.5%
RVF	516	47.4%	431	39.6%	947	87.0%	124	11.4%	17	1.6%
STP	670	46.6%	692	48.1%	1,362	94.7%	76	5.3%	0	0.0%
STO	331	27.5%	607	50.4%	938	77.8%	227	18.8%	40	3.3%
SUP	124	31.0%	163	40.8%	287	71.8%	95	23.8%	18	4.5%
WTW	601	32.8%	809	44.2%	1,410	77.0%	370	20.2%	51	2.8%
UWC	561	16.5%	1,012	29.8%	1,573	46.4%	1,312	38.7%	506	14.9%
Total	11,488	46.3%	8,524	34.3%	20,012	80.6%	3,851	15.5%	974	3.9%

*Excludes students who did not have a high school rank.

The percentage of UW System new freshmen graduating in the top 25% of their high school classes is higher than the percentage ten years ago but slightly lower than the percentage five years ago (Figure 2).

Figure 2
UW System New Freshmen by High School Rank
Fall 1989, Fall 1994, and Fall 1999



*Excludes students who did not have a high school rank.

Appendix A
UW System New Freshman Headcount Enrollment by Institution
Fall 1972 to Fall 1999

	MSN	MIL	EAU	GBY	LAC	OSH	PKS	PLT	RVF	STP	STO	SUP	WTW	UWC	Total
1972	4,219	3,042	2,308	668	1,605	2,226	1,183	1,020	804	1,876	994	591	1,660	2,438	24,634
1973	4,263	3,575	2,207	549	1,640	1,941	1,065	877	787	1,614	1,001	558	1,559	2,932	24,568
1974	4,394	3,358	2,419	646	1,862	1,730	1,052	897	973	1,647	1,227	511	1,443	2,930	25,089
1975	4,654	3,171	2,483	575	1,942	1,889	1,026	1,081	1,117	1,879	1,111	508	1,757	3,453	26,646
1976	3,918	2,994	2,245	560	1,884	1,709	784	1,150	1,264	1,913	1,279	485	1,915	3,158	25,258
1977	4,217	2,741	2,623	563	2,140	1,666	783	1,154	1,154	2,053	1,291	553	1,826	3,293	26,057
1978	4,683	3,165	2,555	597	2,057	1,752	909	1,040	1,199	1,960	1,414	465	1,773	2,991	26,560
1979	4,836	2,833	2,695	677	2,176	1,851	1,009	1,107	1,245	1,970	1,407	425	2,026	3,104	27,361
1980	5,021	2,845	2,737	789	2,053	1,807	1,056	1,227	1,317	2,021	1,507	446	2,165	3,461	28,452
1981	4,683	2,808	2,441	773	2,040	2,004	1,045	1,297	1,294	1,966	1,375	404	2,195	3,505	27,830
1982	4,797	2,684	2,494	714	1,928	1,797	954	1,246	1,116	1,712	1,380	382	2,082	3,606	26,892
1983	5,110	2,847	2,475	693	2,028	1,771	1,075	1,201	1,082	1,727	1,374	347	2,135	3,872	27,737
1984	5,490	2,864	2,355	708	2,072	1,869	871	1,062	1,103	1,794	1,388	321	2,189	3,658	27,744
1985	5,687	2,747	2,387	811	2,131	1,804	817	1,176	1,001	1,887	1,436	333	2,253	3,481	27,951
1986	5,383	2,677	2,470	696	2,114	1,947	886	1,127	1,145	1,821	1,419	368	2,136	3,736	27,925
EM I															
1987	5,181	2,390	2,320	817	1,977	1,857	753	1,156	1,053	1,687	1,404	375	2,152	3,775	26,897
1988	5,934	2,647	2,277	862	1,890	1,837	942	1,059	1,048	1,700	1,361	411	1,898	4,238	28,104
1989	4,993	2,461	1,934	782	1,689	1,730	757	995	957	1,690	1,143	414	1,836	3,663	25,044
1990	4,699	2,446	1,736	746	1,622	1,608	782	943	939	1,580	1,130	346	1,953	3,565	24,095
EM II															
1991	4,642	2,153	1,796	829	1,655	1,455	760	1,027	1,054	1,505	1,177	478	1,819	3,372	23,722
1992	4,416	1,880	1,869	816	1,495	1,492	769	910	1,026	1,398	1,000	363	1,785	3,454	22,673
1993	4,631	1,930	1,956	770	1,702	1,514	783	950	846	1,375	1,030	344	1,845	3,531	23,207
1994	4,681	1,806	2,088	883	1,504	1,393	770	958	1,004	1,378	1,075	285	1,704	3,121	22,650
EM III															
1995	5,164	1,988	2,038	848	1,747	1,523	744	948	968	1,504	1,144	306	1,900	2,954	23,776
1996	5,455	2,253	2,048	1,027	1,735	1,559	686	965	1,161	1,586	1,287	324	1,842	2,839	24,767
1997	5,880	2,481	2,171	953	1,706	1,758	819	998	1,152	1,551	1,250	352	1,914	2,916	25,901
1998	5,596	2,699	2,156	1,035	1,744	1,923	883	1,122	1,207	1,517	1,345	396	1,931	3,503	27,057
1999	5,664	2,937	2,016	934	1,638	1,852	889	1,138	1,127	1,500	1,324	432	1,907	3,764	27,122

Note: EM I, EM II, and EM III denote the years covered by the first, second, and third phases of Enrollment Management planning.

Appendix B

**UW System New Freshmen by Average High School Percentile Rank and Institution
Fall 1976 to Fall 1999**

	MSN	MIL	EAU	GBY	LAC	OSH	PKS	PLT	RVF	STP	STO	SUP	WTW	UWC	Overall
1976	81.2	66.9	70.9	67.8	65.8	58.8	63.3	66.8	60.4	61.1	61.8	65.3	63.3	60.9	66.8
1977	80.2	68.6	70.6	68.1	64.7	67.6	62.9	66.9	62.5	63.6	61.4	59.4	65.2	61.6	67.2
1978	79.5	65.8	70.4	65.1	66.9	58.2	62.4	67.2	62.6	64.5	60.4	62.2	63.6	61.8	67.1
1979	79.3	66.2	70.7	64.5	65.5	59.1	62.9	64.5	62.1	62.8	60.9	63.2	64.4	61.7	66.9
1980	79.8	64.8	69.9	64.8	65.7	60.2	60.9	64.9	62.2	62.2	60.4	59.0	64.6	58.9	66.3
1981	80.7	64.0	73.8	64.1	66.2	60.0	60.7	65.9	61.6	62.5	59.1	61.4	64.9	59.1	66.5
1982	80.0	67.1	72.0	62.8	64.4	60.3	62.0	63.3	63.4	61.2	57.0	64.1	63.5	58.7	66.3
1983	80.2	66.0	70.5	66.2	63.2	62.0	59.2	61.9	61.2	62.0	55.6	58.6	63.1	56.9	65.6
1984	78.9	67.0	68.6	65.7	63.0	62.6	59.6	63.3	60.0	61.7	53.2	59.1	60.7	57.3	65.3
1985	79.1	66.6	67.9	64.8	63.2	61.3	59.6	63.3	59.7	60.2	53.6	59.2	60.8	55.0	65.0
1986	78.6	66.5	69.2	63.4	61.6	62.0	60.2	63.2	58.6	61.6	54.9	58.7	62.8	53.8	64.7
EM I															
1987	80.6	65.7	68.4	63.6	63.0	63.0	60.7	65.3	60.3	65.8	56.4	60.6	64.3	51.4	65.4
1988	79.9	64.2	72.6	67.5	67.0	66.2	57.8	64.5	64.1	67.1	58.0	62.8	68.0	51.2	66.5
1989	81.4	62.9	67.4	68.8	70.0	66.4	62.9	68.4	63.9	67.6	60.7	62.6	69.8	53.7	68.2
1990	81.7	62.6	67.1	68.7	70.0	68.6	60.5	67.4	64.9	65.7	57.8	60.2	68.6	51.2	67.4
EM II															
1991	81.2	62.8	74.8	69.2	69.4	69.5	59.2	68.5	64.1	69.3	54.9	61.9	66.6	51.7	67.3
1992	82.2	62.7	75.1	71.5	70.7	71.6	58.5	71.0	66.7	70.4	63.7	65.9	65.1	51.1	68.4
1993	82.9	61.3	72.9	72.9	72.5	71.7	58.1	71.2	70.8	70.9	64.4	65.7	65.2	50.5	68.5
1994	84.6	60.7	72.8	70.9	74.9	71.3	59.0	70.3	69.1	72.7	61.2	63.9	64.9	50.3	69.1
EM III															
1995	85.6	59.7	72.4	73.2	74.8	68.9	58.3	68.2	67.6	71.7	60.1	63.9	64.7	49.6	69.1
1996	84.6	58.3	71.2	70.1	75.3	66.9	59.6	68.9	70.7	69.1	60.6	64.0	65.7	50.9	68.9
1997	85.0	58.9	71.7	71.4	76.3	67.8	59.0	67.3	70.5	71.1	61.9	62.5	64.3	50.1	69.1
1998	86.2	58.5	73.1	71.4	77.6	68.2	56.8	67.6	70.6	73.0	63.4	60.9	64.5	50.1	69.0
1999	86.3	58.5	74.8	72.4	78.4	66.9	56.3	66.8	70.8	72.7	62.5	61.8	63.9	49.1	68.5

Note: EM I, EM II, and EM III denote the years covered by the first, second, and third phases of Enrollment Management planning.

OCCASIONAL RESEARCH BRIEFS / INFORMATIONAL MEMORANDA

Informational Memorandum Informational Memorandum Vol. 00, No. 1, June 2000 Informational Memorandum Informational Memorandum	Trends in Enrollment: Fall 1999 Update The New Freshman Class: Fall 1999 New Freshman Outcomes: Retention and Graduation Degrees Conferred: 1998-99 Update Student Financial Aid: 1998-99 Update
Vol. 99, No. 1: April 1999 Informational Memorandum Informational Memorandum Informational Memorandum	The Graying of the Faculty in the UW System Trends in Enrollment: Fall 1998 Update Student Financial Aid: 1997-98 Update The New Freshman Class: Fall 1998
Vol. 98, No. 1: February 1998 Vol. 98, No. 2: February 1998 Vol. 98, No. 3: May 1998 Informational Memorandum	Student Financial Aid in the UW System: 1996-97 Update Trends in Degrees Conferred: 1996-97 Update Transfer Students Trends in Enrollment: Fall 1997 Update
Vol. 97, No. 1: March 1997	Access Update: The Class Of Fall 1996
Vol. 96, No. 1: May 1996 Vol. 96, No. 2: September 1996	New Freshman Outcomes: Retention and Graduation 1994-95 Faculty Age Distributions In The UW System
Vol. 95, No. 1: February 1995 Vol. 95, No. 2: March 1995 Vol. 95, No. 3: March 1995 Vol. 95, No. 4: May 1995 Vol. 95, No. 5: May 1995 Vol. 95, No. 6: December 1995	Trends In Enrollment: Fall 1994. Trends In Degrees Conferred: 1993-94 Update. Student Financial Aid Update: 1993-94. Access Update: The Class Of Fall 1994 New Undergraduate Class: Fall 1994 New Freshman Outcomes: Retention and Graduation
Vol. 94, No. 1: February 1994 Vol. 94, No. 2: February 1994 Vol. 94, No. 3: April 1994 Vol. 94, No. 4: April 1994 Vol. 94, No. 5: May 1994 Vol. 94, No. 6: May 1994	Trends In Degrees Conferred, 1982-83 To 1992-93. Trends In Enrollment: Fall 1993 Update. Student Financial Aid In The UW System, 1992-93 Update. Meeting The Financial Aid Needs Of UW Resident Undergraduates. Access Update: The Class Of Fall 1993. The New Undergraduate Class: Fall 1993.
Vol. 93, No. 1: February 1993 Vol. 93, No. 2: March 1993 Vol. 93, No. 2: March 1993 Vol. 93, No. 3: March 1993 Vol. 93, No. 4: March 1993 Vol. 93, No. 5: March 1993	Trends In Enrollment: Fall 1992 Update. APPENDIX Access Update: The Class of Fall 1992 Freshman Admission Requirements at the University of Wisconsin. Access Update: The Class Of Fall 1992. The New Undergraduate Class: Fall 1992. New Freshman Outcomes: Retention, Graduation And Time To Degree. Trends In Degrees Conferred, 1981-82 To 1991-92.
Vol. 92, No. 1: February 1992 Vol. 92, No. 2: March 1992 Vol. 92, No. 3: April 1992 Vol. 92, No. 4: May 1992 Vol. 92, No. 5: June 1992 Vol. 92, No. 6: June 1992 Vol. 92, No. 7: October 1992	Access To The UW System; Patterns Of Application, Admission and Enrollment Of New Freshmen. Trends In Degrees Conferred, 1980-81 To 1990-91. Trends In Enrollment: Fall 1991 Update. Minority Student Trends. Annual Status Report On Student Financial Aid In The UW System: 1990-91. Characteristics Of New Undergraduates: Fall 1991 Update. Trends In Faculty Teaching Assignments.
Vol. 91, No. 1: January 1991 Vol. 91, No. 2: March 1991 Vol. 91, No. 3: May 1991 Vol. 91, No. 4: May 1991 Vol. 91, No. 5: August 1991	Trends In Staffing. Outcomes Of New Freshman Students: Retention, Graduation and Time To Degree. Characteristics Of New Freshmen. Annual Status Report On Student Financial Aid In The UW System, 1989-90. Trends In Enrollment.

Copies are available from the University of Wisconsin System, Office of Policy Analysis and Research, 1534 Van Hise Hall, 1200 Linden Drive, Madison, Wisconsin 53706 Phone: (608) 262-6441. URL: <http://www.uwsa.edu/opar/>

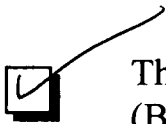


U.S. Department of Education
Office of Educational Research and Improvement (OERI)
National Library of Education (NLE)
Educational Resources Information Center (ERIC)



NOTICE

REPRODUCTION BASIS



This document is covered by a signed "Reproduction Release (Blanket) form (on file within the ERIC system), encompassing all or classes of documents from its source organization and, therefore, does not require a "Specific Document" Release form.



This document is Federally-funded, or carries its own permission to reproduce, or is otherwise in the public domain and, therefore, may be reproduced by ERIC without a signed Reproduction Release form (either "Specific Document" or "Blanket").